

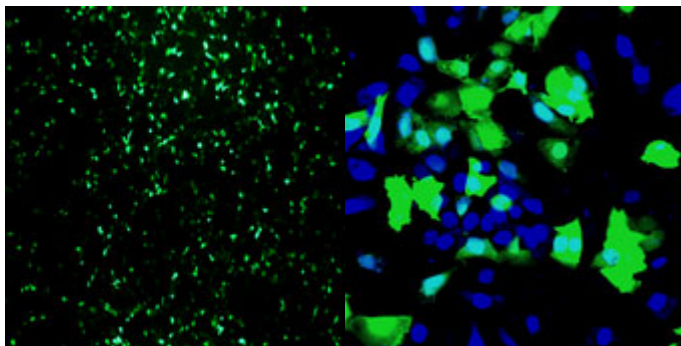


## ***TransIT*®-Prostate Transfection Kit**

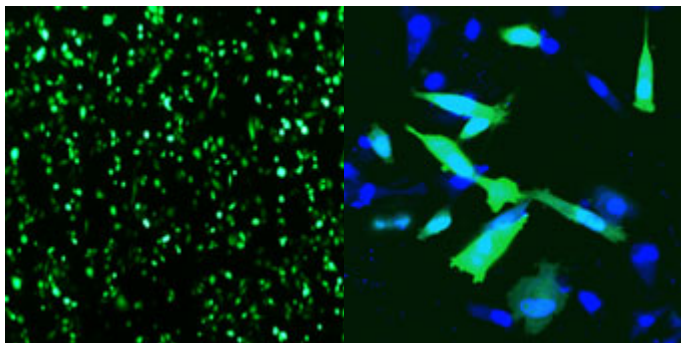
**A high efficiency, low toxicity, DNA transfection reagent optimized for prostate cell types**

- **Unique Formulation**—Each kit contains a base and booster reagent to maximize transfection performance in prostate cell types.
- **Low Cellular Toxicity**—Maintain cell density and reduce experimental biases.
- **High Efficiency Delivery**—Achieve 50% transfection efficiency in DU 145, PC3 and LNCaP cells to ensure experimental success.

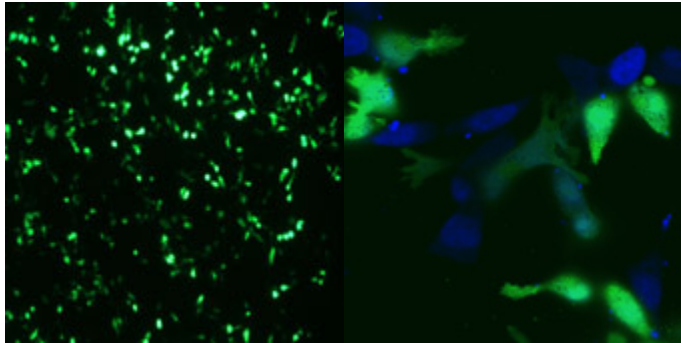
### **Data**



**DU 145 Cells**



**PC3 Cells**



LNCaP Cells

**Figure 1. The *TransIT*-Prostate Kit Achieves High Transfection Efficiency.**

**Left Panel:** DU 145, PC3, and LNCaP cells transfected with pEGFP (green) using *TransIT*-Prostate Kit in complete media for 48 hours.

**Right Panel:** DU 145, PC3, and LNCaP cells transfected with pEGFP (green) using *TransIT*-Prostate Kit in complete media for 48 hours then counter stained to visualize the nuclei (blue).