

# Midori Green Advance Nucleic Acid Stain

## Non-Carcinogenic Ethidium Bromide Alternative

- Use in the same way as Ethidium Bromide in agarose gel electrophoresis
- Comprehensive safety data available
- Easy to handle
- 20,000X concentrate



Midori Green Advance is a new nucleic acid stain for visualization of nucleic acids in agarose gels and has been developed to replace toxic Ethidium Bromide, a potent mutagen, for visualization of nucleic acids in agarose gels.

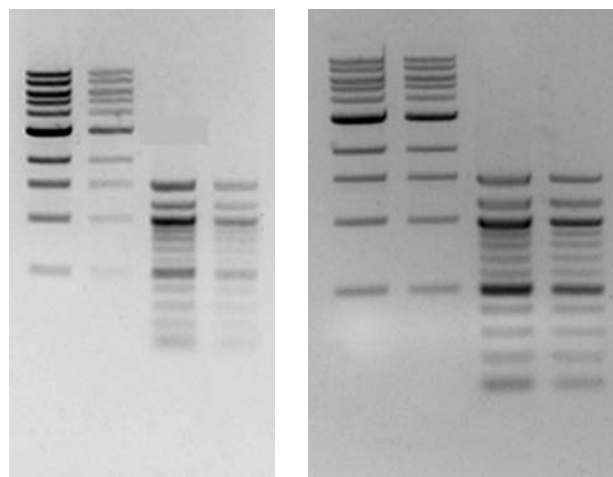
Midori Green Advance emits green fluorescence when bound to DNA. It has two secondary fluorescence excitation wavelength peaks when bound to nucleic acids at around 270nm and 290nm and one strong excitation peak at 490nm. The emission wavelength for the Midori Green Advance is around 530nm meaning Midori Green Advance is compatible with a wide variety of gel imagers.

Midori Green Advance was developed to work with Blue Light LED illuminators, like the FastGene® Blue Light LED Illuminator, but it can also be used with regular UV transilluminators.

### CONVINCING SAFETY DATA

The safety of **Midori Green DNA Advance Stain** has been confirmed with four tests:

1. Ames Test; Non-Carcinogenic
2. The Mouse Bone Marrow Micronucleus Test; Negative
3. Chromosome Aberration Test; Negative
4. Latex and Nitrile Gloves Penetration Test; Negative in the time tested



Comparison of sensitivity between Ethidium Bromide (left) and Midori Green Advance (right) using a UV-transilluminator (inverse). Data kindly provided by Ms. Abel, Heinrich-Heine University, Dusseldorf, Germany

## Midori Green Direct DNA Stain

Midori Green Direct is a totally new approach. There is no need to stain the gel, just mix the sample with this dye (1:10 dye:sample) and load it onto the gel, loading dye is included. This provides very high sensitivity with an excellent signal: noise ratio.

### Ordering Information

Product Number	Suppliers Reference	Description	Pack Size
S6-0020	MG03	Midori Green Advance DNA Stain, sufficient for 1000ml Agarose Gel	50µl
S6-0022	MG04	Midori Green Advance DNA Stain, sufficient for 20L Agarose Gel	1ml
S6-0016	MG05	Midori Green Direct DNA Stain	25µl
S6-0018	MG06	Midori Green Direct DNA Stain	1ml

Please contact technical support for additional information on any of these products