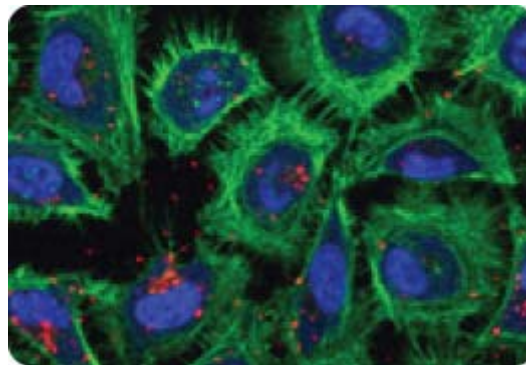


## *Label* IT® Plasmid Delivery Controls

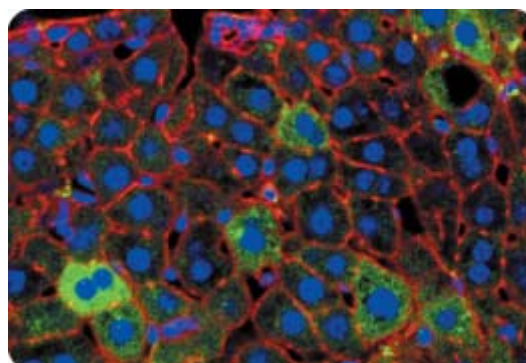
Fluorescently labeled plasmid ideal for *In Vitro* and *In Vivo* tracking

- **Sensitive** - Easily visualize transfected cells and assess delivery efficiency using fluorescent microscopy.
- **Compatible** - Suitable for co-delivery experiments with functional plasmids.
- **Ease of Use** - Supplied as a ready to use 0.5 mg/ml concentration for both *In Vitro* and *In Vivo* tracking studies.

### Data



**Figure 1. The *Label* IT® Cy3™ Plasmid Delivery Control Allows Quick Assessment of Delivery Efficiency.** HeLa cells were transfected in serum-containing media with the *Label* IT® Cy3™ Plasmid Delivery Control (red) using the *TransIT*®-LT1 Transfection Reagent. Twenty-four hours post-transfection, the cells were fixed, then counterstained to locate the nuclei (blue) and to stain the actin (green).



**Figure 2. Visualization of *Label* IT® Fluorescein Plasmid Delivery Control in Liver Sections Following Tail Vein Injection.** *TransIT*®-QR Hydrodynamic Delivery Solution was used to deliver 25 µg of *Label* IT® Fluorescein Plasmid Control (green) to a mouse using hydrodynamic delivery via the tail vein. One hour post-injection the liver was harvested. Sections were fixed to stain the nuclei (blue) and the actin (red).