

# InGenius

Advanced resolution imaging



If you are looking for a high specification, easy to use system for gel documentation and analysis, the InGenius range is perfect. These compact systems come with their own innovative, safe darkroom and can be used with either a 0.3m pixel camera (InGenius L), a 1.4m pixel camera (InGenius LHR) or a 2m pixel camera (InGenius LXT).

The InGenius systems are cost-effective because they offer so many different options to enable you to image a wide range of fluorescent stains.

Analysing your image is simple too, with the fully automated GeneTools analysis software.



**The InGenius range offers you:**

- PC driven system with real-time image capture, enhancement and analysis
- Standard resolution 0.3 million pixel CCD camera with InGenius L
- High resolution 1.4 million pixel CCD camera with InGenius LHR
- Super resolution 2 million pixel CCD camera with InGenius LXT
- Flexible lighting options for comprehensive fluorescent imaging
- Compact darkroom with safety features
- Instant photographic quality prints to any PC compatible printer
- Programmable user configurations
- Networking for instant archiving

**How you can use an InGenius**

These systems are used with a UV transilluminator that provides illumination from below the gel. This is the usual configuration for looking at Ethidium bromide DNA gels. Other options include the use of transmitted white or blue light, and even overhead Epi UV or white light. These flexible lighting options make the systems suitable for generating images of a wide range of fluorescent samples.

Using these systems you can produce images of electrophoresis gels stained with any of these dyes and more:

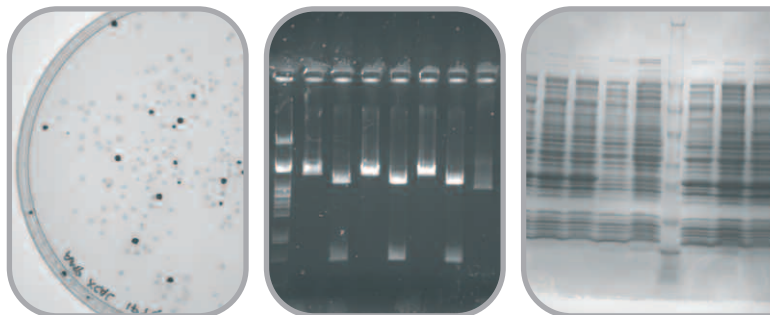
- Ethidium Bromide • Coomassie Blue • Silver Stain • SYBR® Gold • SYBR® Green • SYBR® Safe • GelStar® • Sypro® Red • Sypro® Ruby • Sypro® Orange • Fluorescein • Rhodamine Red™ • Texas Red® • Pro-Q® Diamond • Deep Purple™

As new dyes are released, we work to optimise their use with an InGenius, so please check our website or contact our technical support team if you need information on imaging dyes.

To meet your ever changing imaging needs, the exact specifications of our systems are constantly being upgraded. For the latest information, please check out our web site on [www.syngene.com](http://www.syngene.com)

The InGenius range is also suitable for viewing and capturing images from:

- Agar plates of dark, light or two colour colonies •
- Cells in flasks • Autoradiographs •
- DNA, RNA or protein on membranes •
- Spot and slot blots of DNA, RNA or protein •
- TLC plates • Cells or solutions in microtitre plates •
- DNA or protein macroarrays



**Features**

**Benefits**

|   |   |
|---|---|
| 16 bit images (0-65535 grey levels dynamic range) | Precise quantification  |
| Low cost camera option (InGenius)                 | Inexpensive gel documentation system                                |
| Filter drawer                                     | Capable of viewing a range of different fluorescent stains          |
| UV to white light converter screen                | Easy imaging of protein gels, autoradiographs and colony plates     |
| Universal darkroom                                | Saves money by allowing use of any mini bench-top transilluminator  |
| GeneTools analysis software                       | Saves time by automating analysis of gels, colony plates, and blots |

Deep Purple™ is a registered trademark of Amersham Biosciences Ltd. Sypro®, Sybr®, Pro-Q®, Rhodamine Red® and Texas Red® are trademarks of Molecular Probes Inc. GelStar® is a trademark of FMC Corporation.



**Syngene Europe and International Headquarters:**  
 Beacon House Nuffield Road Cambridge  
 CB4 1TF UK Tel: +44 (0)1223 727123  
 Fax: +44 (0)1223 727101 email: [sales@syngene.com](mailto:sales@syngene.com)

**Syngene USA Headquarters:**  
 5108 Pegasus Court Suite M Frederick  
 MD 21704 USA Tel: 800-686-4407/301-662-2863  
 Fax: 301-631-3977 email: [ussales@syngene.com](mailto:ussales@syngene.com)

**Website: [www.syngene.com](http://www.syngene.com)**