

Buccal DNA Isolation kit

Stabilising and Lysis Kit

DNA Quality Ready Kit



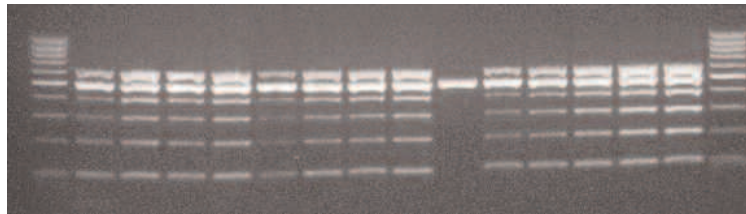
Buccal DNA Isolation Kit

The Isohelix Buccal DNA Isolation kits have been specifically formulated to produce high DNA yield and purity from Buccal Swabs. The kits have been fully optimised at Cell Projects for use on Buccal cell samples and offer reduced handling times, increased DNA yields and many other important technical benefits for their use in manual, 96-well or other HT Formats.

- High Purity and Yield
- Optimised to Buccal Cells
- Fast Handling times
- Protocol Integrated to swabs.
- Manual or HT Formats.
- No solvent based Chemicals
- No Columns or Filtration.

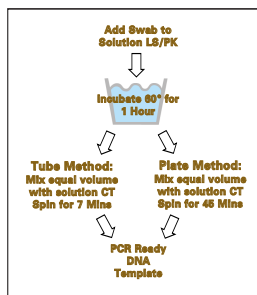
Shows higher yields of DNA with the Isohelix kits over Column based methodologies

L 1 2 3 4 5 6 7 8 9 10 11 12 13 14 L



100, 200, 300, 400, 600 bp from human DNA; 500 bp from Lambda

Lane	Sample	Extraction	Final vol.	Used PCR	Lane	Sample
1	Swab 1 (donor 1)	Spin Col	150 µl	5 µl -1/10 dil	9	Blank
2	Swab 2 (donor 1)	Isohelix	150 µl	5 µl -1/10 dil	10	Human DNA 6.25 ng
3	Swab 3 (donor 2)	Spin Col	150 µl	5 µl -1/10 dil	11	Human DNA 12.5 ng
4	Swab 4 (donor 2)	Isohelix	150 µl	5 µl -1/10 dil	12	Human DNA 25 ng
5	Swab 5 (donor 3)	Spin Col	150 µl	5 µl -1/10 dil	13	Human DNA 50 ng
6	Swab 6 (donor 3)	Isohelix	150 µl	5 µl -1/10 dil	14	Human DNA 100 ng
7	Swab 7 (donor 4)	Spin Col	150 µl	5 µl -1/10 dil	L	100 bp DNA ladder
8	Swab 8 (donor 4)	Isohelix	150 µl	5 µl -1/10 dil		



Comparison of Isohelix versus Spin column methods

	Spin Column	Isohelix
Ethanol	YES	NO
Incubation step at >50°C	YES	YES
Number of Columns	1	0
Number of solutions	6	4
Number of tubes	6	2
Number of liquid transfers	14	5
Expected yields	0.5 to 3.5 µg	4 to 10µg

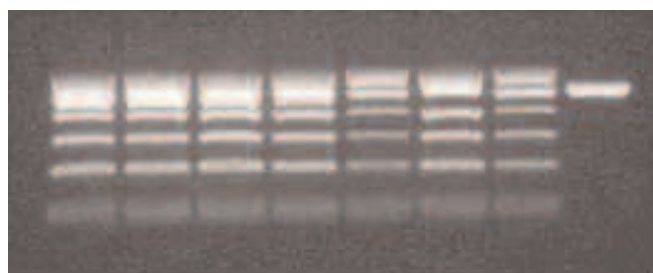
Stabilising and Lysis Kit

The Isohelix Stabilising and Lysis kits are designed to fully stabilise your DNA (taken from swabs and other source material) from enzymatic activity that occurs naturally after Buccal sampling. The kit is designed to store the samples at room temperature and shows no visible loss of stability even after 7 months of data collected to date. The DNA LS Kit also contains a component to fully lyse the cells as well as enzymatic inhibitors, this releases all the DNA and maintains the structural integrity.

- Stabilises your DNA
- Improves DNA Yield and Purity
- Room Temperature storage
- Lyses the cells
- Long term storage for DNA

DNA Stability comparison over 7 months using the Isohelix Stabilising and Lysis kit

1 2 3 4 5 6 7 8



Swab/saliva placed in the storage solution (LS) immediately after collection

100, 200, 300, 400, 600 bp from human DNA; 500 bp from Lambda

Lane	Sample	Period in LS	Lane	Sample	Period in LS
1	Swab 1a (donor 1)	2 months	5	Saliva 4 (donor 3)	5 months
2	Swab 1b (donor 1)	7 months	6	Saliva 9 (donor 3)	4 months
3	Swab 2a (donor 2)	2 months	7	Human DNA (10 ng)	
4	Swab 2b (donor 2)	7 months	8	Blank	

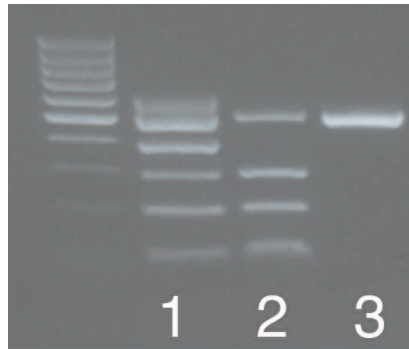
For Swab or DNA kit info www.isohelix.com or info@isohelix.com

Isohelix is a division of Cell Projects.Ltd www.cellprojects.com the molecular biology solutions company

DNA Quality Ready Kit

The Isohelix DQC kit is a PCR reaction designed to check the quality and presence of the Human DNA before you start your full research or testing program. The DQC kit can also be used to provide comparative data against different types of DNA Isolation methods and the presence of PCR inhibitors.

- Checks Human DNA Quality prior your Research.
- Use it to select the most efficient Isolation protocol.

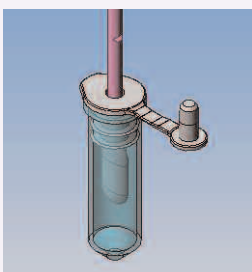


Lane 1	Acceptable results containing good quality DNA
Lane 2	Unacceptable the genomic DNA is visibly starting to degrade
Lane 3	Completely unacceptable only the positive control is present

Smarter collection using Isohelix Buccal Swabs.

The Isohelix range of swabs have been extensively developed to provide superior results over conventional buccal swabs

- Optimised absorbency, routinely above 4 µg.
- Designed to maximise DNA and Cell uptake.
- Easy release of DNA.
- Suitable for Manual and HT applications.
- Reproducible and easy to use.
- Different design formats.



SK-2 DNA Detachable Swab Head

After using the swabs the swab material is pulled away from the shaft, improves yields, easier to manipulate in the Isolation stages, improved use in HT.



SK-1 DNA Swab Pack

Conventional design and use incorporated all the advantages of the unique swab material

Cat. No.	Description
DNA Isolation and Handling kits	
DSK-3	1.5ml of Cell Lysis and Long Term DNA stabilising buffer and PK for 3 reactions.
DSK- 50	25ml of Cell Lysis and Long Term DNA stabilising buffer and PK for 50 reactions
DDK-3	Swab Optimised DNA Isolation kit for 3 extractions contains 4 solutions.
DDK-3SK1	As DDK-3 with 3 X SK1 swabs
DDK-3SK2	As DDK-3 with 3 X SK2 swabs
DDK-50	Swab Optimised DNA Isolation kit for 50 extractions contains 4 solutions.
DDK-50SK1	As DDK-50 with 50 X SK1 swabs
DDK-50SK2	As DDK-50 with 50 X SK2 swabs
DQC-50	PCR check kit to test quality of Human DNA taken from swabs for 50 reactions contains 2 solutions
DNA Buccal Swabs	
SK-1S	100 x 1 Swab with 5 ml tube and cap individually wrapped, gamma treated and boxed
SK-2S	100 X 1 swab with 2ml tube and SR- special release cap, individually wrapped, gamma treated and boxed
SK-3S	250 swabs, individually wrapped, gamma treated, and boxed.
SK-4S	500 swabs 2 wrapped individually, gamma treated, packed 250 units to a box

For Swab or DNA kit info www.isohelex.com or info@isohelex.com

Isohelix is a division of Cell Projects.Ltd www.cellprojects.com the molecular biology solutions company