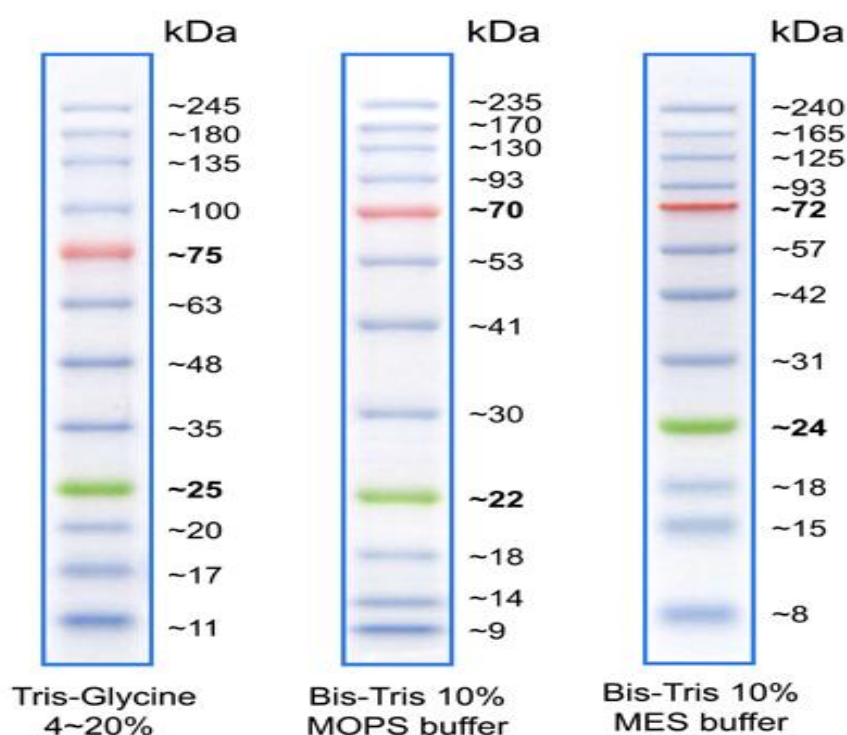


## BLUeye Prestained Protein Ladder

- **ONLY 1.5~2.5 µl** per well for general Western transferring
- 3 µl or 5 µl per loading for clear visualization during SDS-PAGE
- Supplied ready-to-use

BLUeye Prestained Protein Ladder is a three-colour protein standard with 12 pre-stained proteins covering a wide range of molecular weights from 10 to 245 kDa. Proteins are covalently coupled with a blue chromophore except for two reference bands (one green and one red band at 25 kDa and 75 kDa respectively) when separated on SDS-PAGE (Tris-glycine buffer).

BLUeye ladder is supplied in gel loading buffer and is ready to use.



### Ordering Information

Description: BLUeye Prestained Protein Ladder, 500µl (approx 250 loads @2ul/well)  
Catalogue Number: S6-0024

### Contents

Approximately 0.1~0.4 mg/ml of each protein in the buffer (20 mM Trisphosphate, pH 7.5 at 25°C), 2 % SDS, 1 mM 2-Mercaptoethanol, 3.6 M Urea, and 15 % (v/v) Glycerol).

### Storage

Stable for up to 3 months at 4°C. For long term storage, store at -20°C.

**Note.** The apparent molecular weight of each protein (kDa) has been determined by calibration against an unstained protein ladder in each electrophoresis condition. All products are for research use only.